

The Return of Bridget

Academy Award winner Renée Zellweger returns to the screens as Bridget Jones in the long-awaited sequel *Bridget Jones: The Edge of Reason*.

At long last Bridget - thirty-something, self-doubting, self-analyzing, career-minded, calorie-counting London singleton - has found romantic bliss. For six glorious weeks, she has been the girlfriend of the exquisitely flawless lawyer Mark Darcy (Colin Firth) and nothing could be better. Or - could it? Despite Darcy's apparent devotion, Bridget still finds herself asking questions about life, love and the proper way to put away underwear. Having finally found her man, Bridget is faced with the equally flummoxing challenge of keeping him. She can't help but wonder: what exactly is it that comes after happily ever after?

Join Bridget on her hilarious and unexpected journey as she navigates the treacherous territory of modern love.



In cinemas from 12 November 2004

United International Pictures, Universal Pictures and Working Title Films present *Bridget Jones: The Edge of Reason*. The film is directed by Beeban Kidron and stars Renée Zellweger, Hugh Grant and Colin Firth. It is based on Helen Fielding's number one best-seller and adapted for the screen by Andrew Davies, Helen Fielding, Richard Curtis and Adam Brooks. The film is produced by Jonathan Cavendish, Tim Bevan and Eric Fellner.



Bridget's Locations

1 Serpentine Gallery

Open daily from 10-6. For more information, visit www.serpentinegallery.org. Admission free.

📍 Queensway, Lancaster Gate South Kensington

2 Kensington Gardens

📍 Queensway

3 Primrose Hill

📍 Chalk Farm, Swiss Cottage

4 Borough Market

The market is open to the public on Fri 12-6 and Sat 9-4.

📍 London Bridge

5 Globe Pub

📍 Bedale St, Borough Market, SE1

📍 London Bridge

6 Tower Bridge

📍 Tower Hill, London Bridge

7 More London

An award-winning business estate on the Thames between London Bridge and Tower Bridge.

📍 London Bridge

8 Rigby & Peller

22a Conduit St, Mayfair, W1

📍 Oxford Circus

9 Debenhams

334 - 348 Oxford Street

📍 Bond Street, Oxford Circus

10 The Light Bar & Restaurant

Shoreditch High Street, EC2

📍 Shoreditch, Liverpool St

11 Institution of Civil Engineers*

No 1 Great George Street, SW1

📍 Westminster

12 County Hall

📍 Waterloo, Westminster

13 Middle Temple

Please phone Middle Temple on 020 7427 4800 before visiting to check opening hours.

📍 Temple

14 2 Temple Place*

Temple Place, WC2

📍 Temple

OFF MAP

15 Chiswick Business Park*

📍 Gunnersbury

📍 Gunnersbury

16 Hanwell Cemetery

Uxbridge Road, W5

📍 Ealing Broadway, followed by a short taxi ride

* These three locations are not open to the public. Can be viewed from outside only.



London on Film

You love the film, so now why not visit some of the London locations in the movie?

FILM LONDON and VISIT LONDON have joined forces to create a special *Bridget Jones: The Edge of Reason* Movie Map. We've highlighted all the key central London spots featured in the movie and suggest the nearest Tube station to each destination.

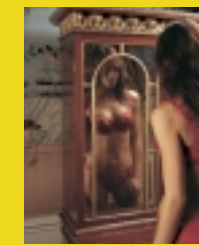
YOU ❤️ LONDON

With most Tubes running every 5-10 minutes all week, there's no better way than the Underground to discover *Bridget Jones: The Edge of Reason* movie locations. A zone 1-3 Travelcard will allow you to visit all the destinations we've included in the map - or why not buy a Weekend Travelcard and you'll save 25% on the price of two daily tickets. Please visit www.tfl.gov.uk/tube for more information.

Alternatively you can pick out individual locations you particularly want to see and head straight for them. The choice is yours. Simply refer to the map and listings.



Rigby & Peller are offering 10% off your purchase when you produce this voucher in one of our London stores from 12 Nov 2004 - 12 Mar 2005.



Rigby & Peller are specialists in exclusive lingerie and their name is synonymous with the finest made-to-measure and ready-to-wear garments. They have a quality of service and expertise that is simply second to none.

Go and treat yourself to the Rigby & Peller experience.



TOWER BRIDGE EXHIBITION



Tower Bridge Exhibition are offering £1 off full price adult ticket (normally £5.50) when you present this voucher.

THE LIGHT BAR + RESTAURANT

THE LIGHT BAR is offering one bottle of house wine free with every evening two course à la carte meal, for every 2 people.



Finalist Evening Standard Bar of the Year, 2001

Rigby & Peller
22a Conduit Street,
Mayfair, London,
W1S 2XT
Tel: 020 7491 2200

2 Hans Road,
Knightsbridge, London,
SW3 1RX
Tel: 020 7589 9293
www.rigbyandpeller.com

Terms and conditions
1. Offer subject to availability. 2. Offer may not be used in conjunction with any other offer. 3. No cash alternative. 4. Offer valid until 12 Mar 2005. 5. One voucher per discount. 6. Photocopies will not be accepted.
This offer is not valid at our Heathrow airport store and/or online and is not redeemable against sale items.

At the **Tower Bridge Exhibition** you can enjoy breathtaking views from the high-level walkways and learn about the history of the Bridge and how it was built.



For opening times and details about how to get here, visit

www.towerbridge.org.uk

Terms and conditions
1. Offer subject to availability. 2. Offer may not be used in conjunction with any other offer. 3. No cash alternative. 4. Offer valid until 31 Dec 2004. 5. One voucher per discount. 6. Photocopies will not be accepted.

THE LIGHT BAR + RESTAURANT

233 Shoreditch High Street, London E1

For opening times and details about how to get here, visit www.thelight1.com



Terms and conditions
1. Offer subject to availability. 2. Offer may not be used in conjunction with any other offer. 3. No cash alternative. 4. Offer valid until 31 Dec 2004. 5. One voucher per discount. 6. Photocopies will not be accepted.

Film London Movie Maps

- > *Bridget Jones: The Edge of Reason* was shot in London with the assistance of Film London. For more information about Film London's work across the capital, visit www.filmlondon.org.uk
- > Movie Maps already produced include *The Mother*, *Love Actually* and *Thunderbirds*. To download copies, visit www.filmlondon.org.uk/moviemaps
- > Look out for the forthcoming map for the new film *Closer* featuring Julia Roberts, Clive Owen, Jude Law and Natalie Portman.

Log on to visitlondon.com to get the latest information on London, to book accommodation, restaurants and entertainment and to register for free updates on great ideas for enjoying yourself in London and enter the free prize draw to win some limited edition Bridget Jones goodies. For information on What's On in London, go to visitlondon.com or tune in to London TV, Sky Digital Channel 244.



Film London is supported by
UK FILM COUNCIL
LONDON DEVELOPMENT AGENCY

Did You Know?

- > The scene featuring Bridget walking across **Tower Bridge** was shot very early one morning and all the people walking across the bridge are extras, not members of the public.
- > As one of the most recognisable bridges in the world, **Tower Bridge** has a starring role in a number of movies including *Tomb Raider*, *The Mummy Returns*, *Thunderbirds*, *Agent Cody Banks 2* and many TV programmes.
- > London's most famous food market, **Borough Market**, has been used in a number of films including *Lock, Stock and Two Smoking Barrels*, *Entrapment*, *Bridget Jones's Diary* and *Harry Potter and the Prisoner of Azkaban*.
- > **Borough Market** was the location for the fight scene between Mark Darcy and Daniel Cleaver in *Bridget Jones's Diary*. Round Two, in the sequel, is fought in the Italian Fountains in **Kensington Gardens**.
- > Previous films that have used the **Serpentine Gallery** as a location include *Wings of a Dove*, *The Rachel Papers* and *Melancholia*.
- > This is **Rigby & Peller's** film debut. This world famous lingerie store has held the Royal Warrant of Appointment as Corsetieres to H.M. Queen Elizabeth since 1960.
- > **Primrose Hill**, which features at the beginning of the movie, is a hugely popular filming location due to its stunning views across London.
- > Bridget's flat is above the famous Globe Pub in **Borough Market**.
- > The Law Society dinner scene was filmed in the Great Hall at the **Institution of Civil Engineers** which doubles as the Guildhall. The Institution features in lots of TV dramas and also *Ghandi*.
- > Mark's office is filmed at **2 Temple Place** which has featured in *What a Girl Wants* which also stars Colin Firth.
- > Mark's office corridor is filmed at another legal location - **Middle Temple**. Many TV and film crews have filmed here and major films include *Shakespeare in Love* and *Elizabeth*.



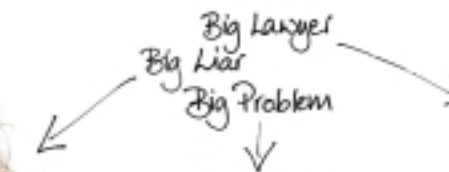
- > The **Serpentine Gallery** is situated in the heart of Kensington Gardens in a 1934 tea pavilion. The scene filmed at the gallery was during an exhibition of the work of John Currin. From 5 Dec 2004 - 16 Jan 2005, the gallery features the work of Polish artist Monika Sosnowska.
- > Bridget's office is filmed at **Chiswick Business Park** which is a major new office park in West London, designed by the Richard Rogers Partnership. It is fast becoming a new media hub for London and it is therefore very fitting that Bridget's office for *Sit Up Britain*, the flagship news programme, is based there.

Images L-R: Tower Bridge; Renée Zellweger/Borough Market; Serpentine Gallery; Fight scene in the Italian Fountains, Kensington Gardens; Rigby & Peller; Renée Zellweger & Colin Firth/Primrose Hill; Bench Corridor; Middle Temple; Chiswick Park

BRIDGET JONES

THE EDGE OF REASON

SAME BRIDGET. BRAND NEW DIARY.



Discover the London filming locations of the capital's most famous singleton ... plus exclusive money-off vouchers for some of Bridget's favourite haunts.



movie map

No. 4